

iMiraTM 2

SMART • SLEEK • SIMPLE

AVANT-GARDE DIGITAL POSTER FRAME



HUAHAI USA LLC

7249 NW 54th ST, MIAMI FL. 33166

Tel: 305-436-8650

E-mail: miami@huahai.us



GRUPO
HUAHAI
华海集团 OPTOELECTRONICS DEVICES



PRODUCT FEATURES

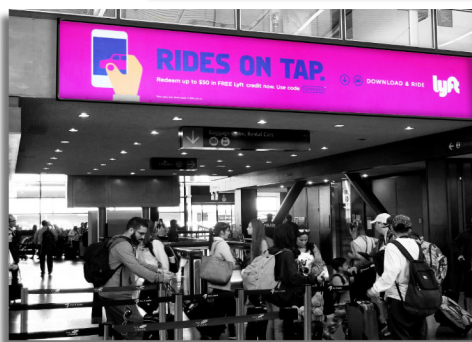
iMira™2 has been engineered with latest technologies to give it a smoother, slimmer profile. It's crafted in beautiful anodized lightweight yet durable aluminum, to make the entire poster frame weigh less than 35kg, making it more portable and easier to install.

Enjoy the privilege of watching or screening your own video, audio or pictures playlists anytime, anywhere with iMira™2. Update your digital content in our powerful built-in media player via WiFi or USB. Easy-to-follow on-screen menu makes it absolutely simple to schedule your content and no complicated configuration is needed whatsoever!

You'll love the speedy convenience of doing servicing and panel module replacements from the front with just a handle magnet. Thanks to the patented cable-less technology in connecting the modules. Yet another advantage, exclusive to your iMira™2.

The futuristic Smart Module ingeniously incorporated into each DSFG iMira™2's system is its powerhouse. Engineered around a high-performance Internet Cyclone IV FPGA cable of parallel processing, and deeper integration with MCU management tools enables the display module to be self-contained in communication and management. Together they form the core of Smart Module and deliver powerful video processing platforms, ensuring all operations converge, thereby ensuring seamless connections like screen monitoring operations and auto-detect work continuously.

iMira™2's pre-integrated software enables you to connect to it with a PC or Android devices from a single location via RJ45, WiFi, 3G, USB and HDMI. That makes it extremely easy to identify your display and manage settings like brightness and contrast. Play your content directly from your device be it a laptop, tablet or smart phone. Perform centralized video control and management via Internet. Your efficiency is increased because you can cast your video remotely without the need to have an on-site controlling device or PC. Administer and monitor your video from the comfort of your office.



Hot Swappable Front Access Module and Patented Cableless Connection

Replace faulty module from the front without the need to disconnect any by using only a handle magnet and while the unit is running!



Immersive Visual Experience

Our 2.5/1.8 mm pixel pitch display is truly seamless and the absence of distracting bezels empowers you to fully exploit your impactful signage content.

Awesome image with Intelligent Content Monitoring & Management

Engineered around a high-performance Internet Cyclone IV FPGA and Advance DDR Flash Chip, iMira's Smart Module is able to deliver excellent image quality with high refresh rate, intelligent video monitoring and worry-free management capabilities.

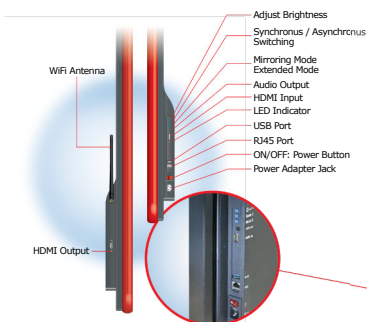


Easy Future Upgrade to Smaller Pixel Pitch to Prolong Your Investment

- High refresh rate (> 1000 Hertz).
- No PC required, thus saves on cost, increases reliability and makes operations simpler.
- Content can be updated via network or via USB drive and the content is stored on the unit itself.
- 5GB of built-in storage supporting almost all video and image formats.



Function Buttons and Connectors



Wall-mounting Options

Our unique wall mountable brackets with built-in levels provides an easy and secure way to affix your iMira to the wall be it horizontal or vertical.

Fold-out Stand

Rest assured of its sturdy support plus the discreet tuck away neatly incorporated into the groove when not used.

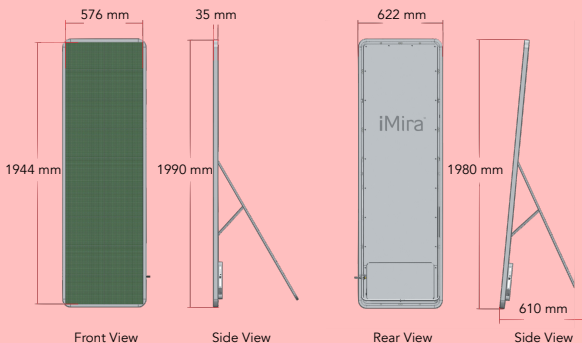
iMiraTM 2



Material Parameter

| | | |
|-------------------------------------|--------------------------|--------------------------|
| Pixel Pitch | 2.571 mm | 1.8 mm |
| Module Size | 288 x 216 mm | 288 x 216 mm |
| Display Resolution | 112 x 84 | 160 x 120 |
| LED Configuration | SMD 3 in 1 | SMD 3 in 1 |
| Pixel Density | 169344 Pixels/Panel | 345600 Pixels/Panel |
| Display Dimension (H x W x D) | 1944 x 576 mm | 1944 x 576 mm |
| Panel Material | Aluminum | Aluminum |
| Outer Frame Color | Black (default) | Negro (default) |
| Weight | ≤40KG | ≤40KG |
| Brightness | 600~1200 Adjustable | 600~1200 Adjustable |
| Drive Mode | 1/28 Constant Scan | 1/30 Constant Scan |
| Viewing Angle | ±80° | ±80° |
| Display Color | 4.4 Trillion | 4.4 Trillion |
| Processing Depth | 12 Bit | 12 Bit |
| Refresh Rate | > 3000 | > 3000 |
| Contrast Ratio | 3000 : 1 | 3000 : 1 |
| Operation Power | 10~240V, 50 ~ 60Hz | AC110~240V, 50 ~ 60H |
| Maximum Power Consumption | 800W/Panel | 800W/Panel |
| Average Power Consumption | 300W/Panel | 300W/Panel |
| Display Mode | Asynchronous/Synchronous | Asynchronous/Synchronous |
| Signal Output | HDMI | HDMI |
| Connection Type | Internet/WiFi/3G/App | Internet/WiFi/3G/App |
| Supported VGA Mode | 224 x 756 | 320 x 1080 |
| Supported Video Files | MPEG/H.264 | MPEG/H.264 |
| Operating Temperature | -10°C ~ 50°C | -10°C ~ 50°C |
| Operating Lifetime (50% Brightness) | ≥100,000 Hours | ≥100,000 Hours |

Características y especificaciones están sujeta a cambios sin previo aviso.



MAINTENANCE MODE



Floor-Standing



Wall Maintenance



Configurations Can Be Customized

Customizable sizes and mounting options available. Sizes are determined by configurations or modules, contact us for more details.